

# Metadata Management XI 3.0

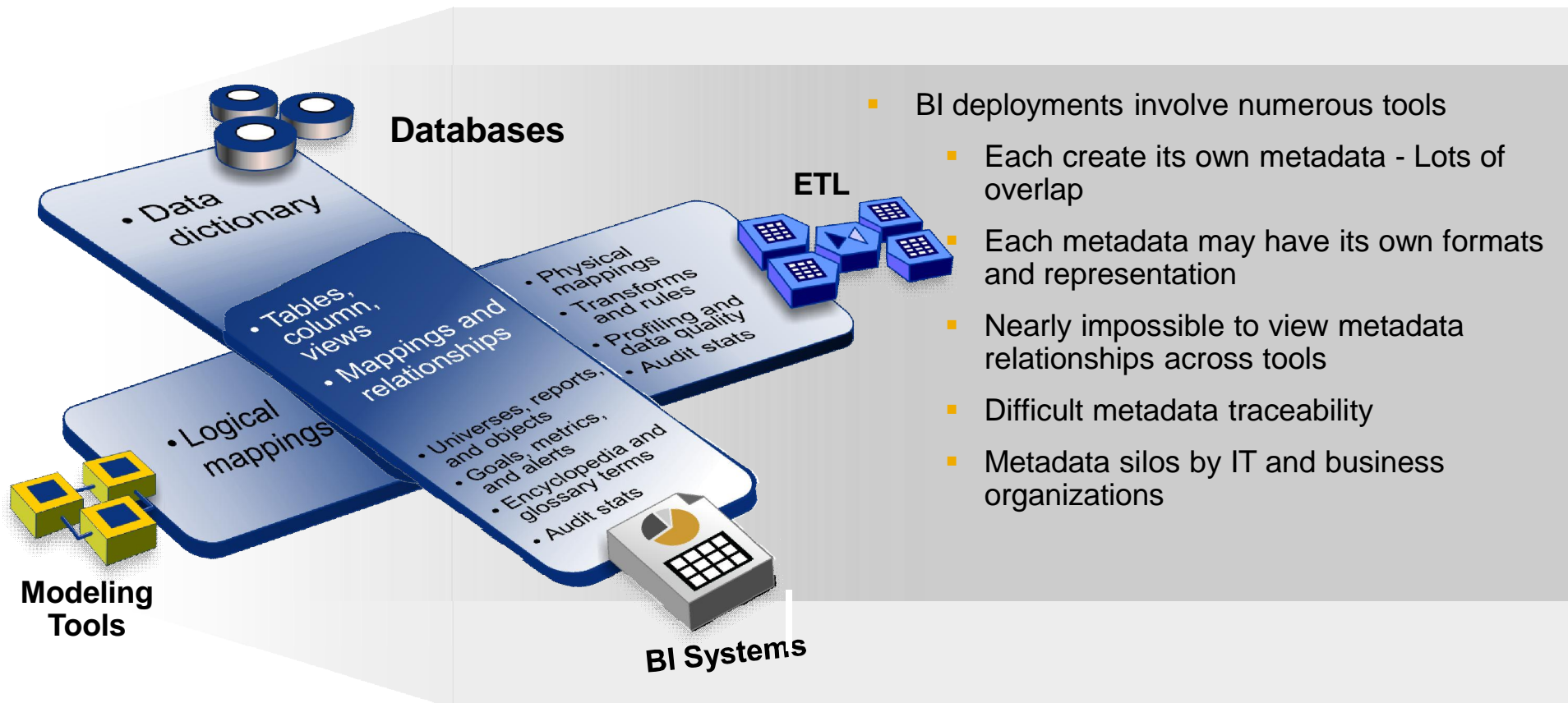
## Scalability, Business Metadata, and Richer Metadata Discovery



Anthony Waite  
Product Manager  
December 19, 2008

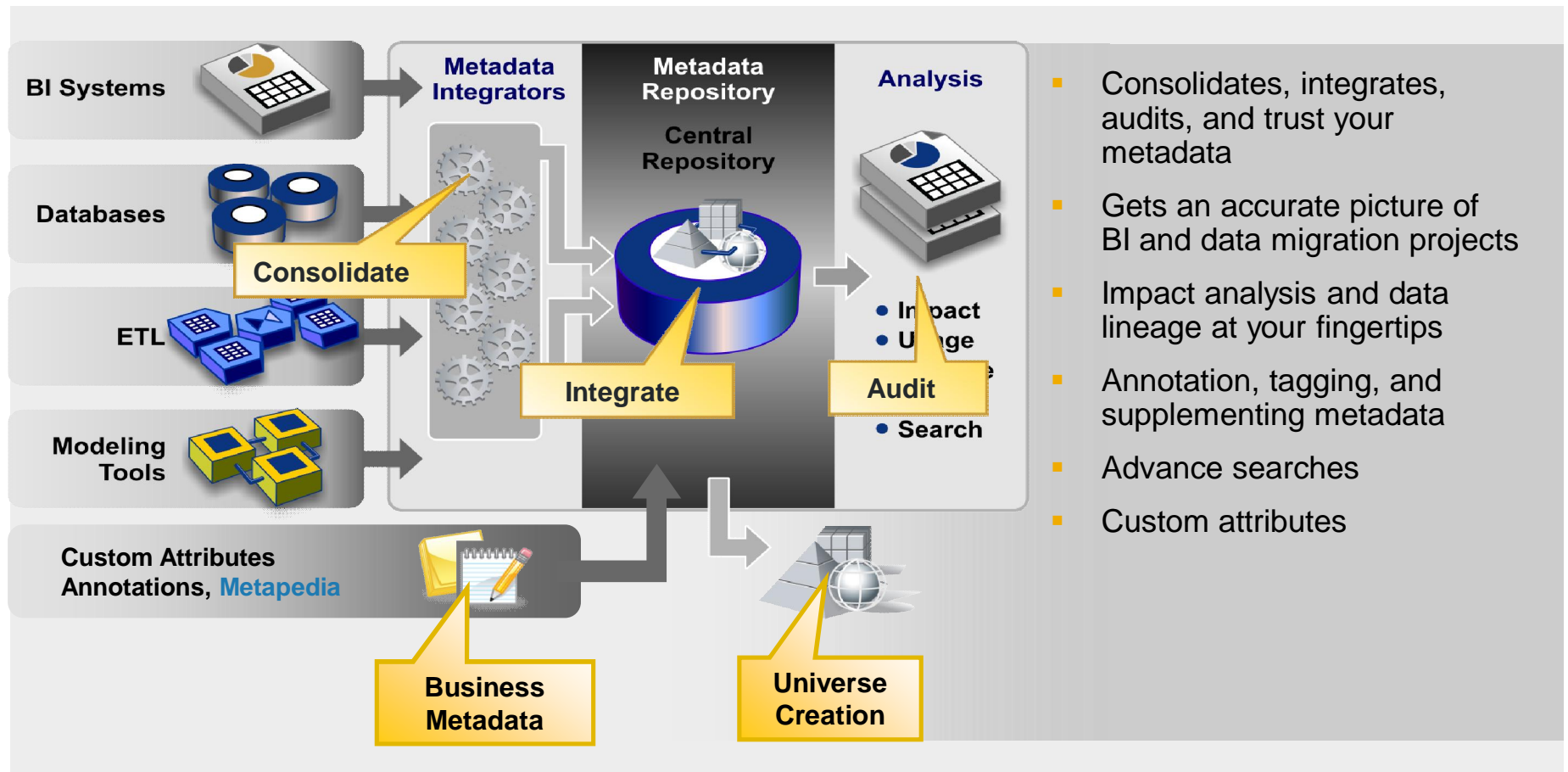
Do you have any doubts about the accuracy of your reports?

## Challenges with Metadata Today



# Metadata Management Overview

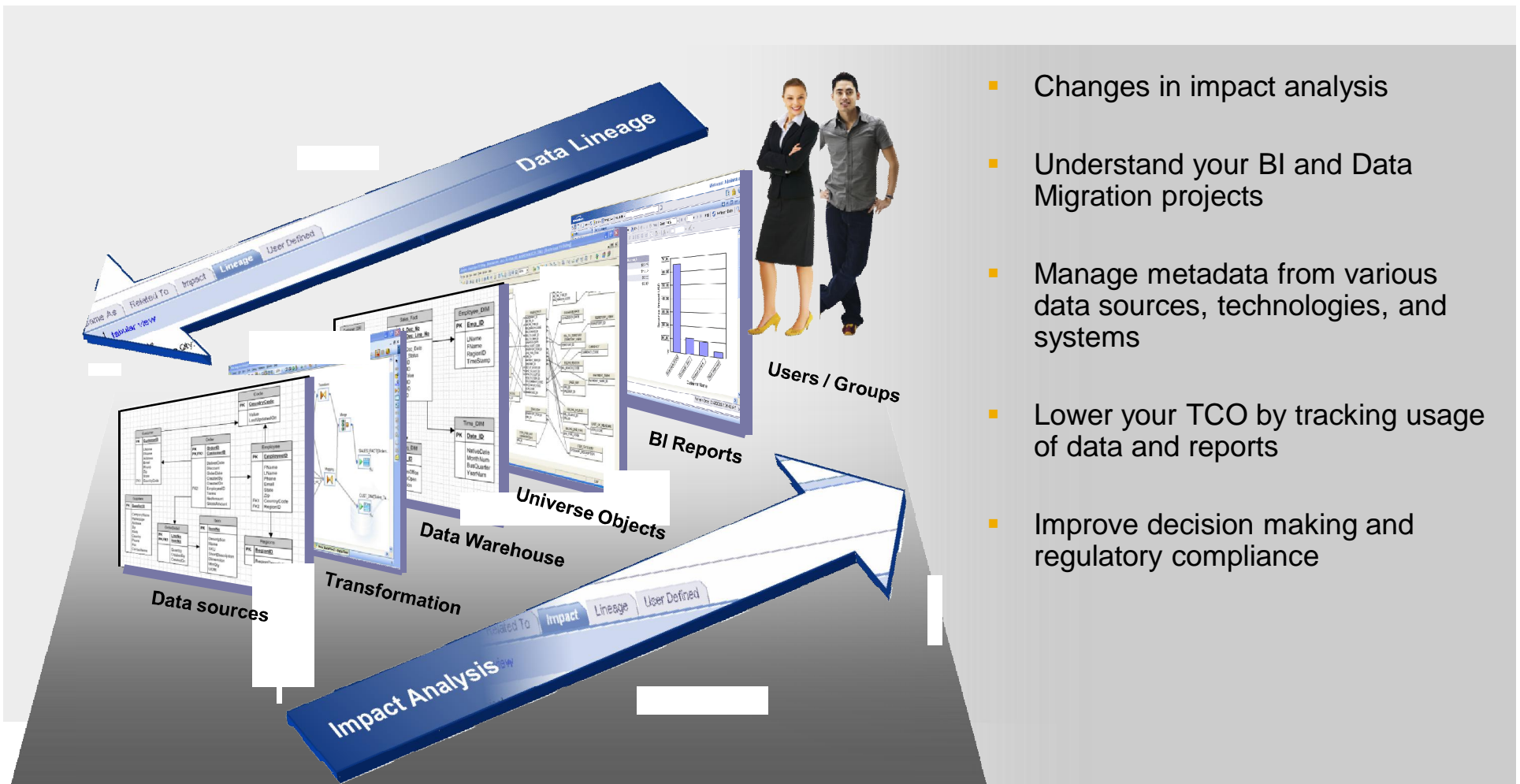
## Metadata Management



- Consolidates, integrates, audits, and trust your metadata
- Gets an accurate picture of BI and data migration projects
- Impact analysis and data lineage at your fingertips
- Annotation, tagging, and supplementing metadata
- Advance searches
- Custom attributes

# Metadata Management Business User Benefits

## Information you can trust



# Metadata Management XI 3.0 Positioning Statement



## Announcing Metadata Management XI 3.0

*Metadata Management XI 3.0 is the only BI centric metadata management solution that promotes data governance and enables trusted information*



# Metadata Management XI 3.0 Value Propositions & Key Messages

Business Objects  
an SAP company

SAP

- **Build a business encyclopedia for business terms that supports data governance initiatives**  
**Metapedia** – Business taxonomy that enables discovery, common understanding, and consistent implementation of business concepts
- **Higher performance across broader spectrum of deployment scenarios**  
Scalable metadata architecture that is flexible and unified
- **Easy change impact and data lineage analysis**  
Richer metadata discovery

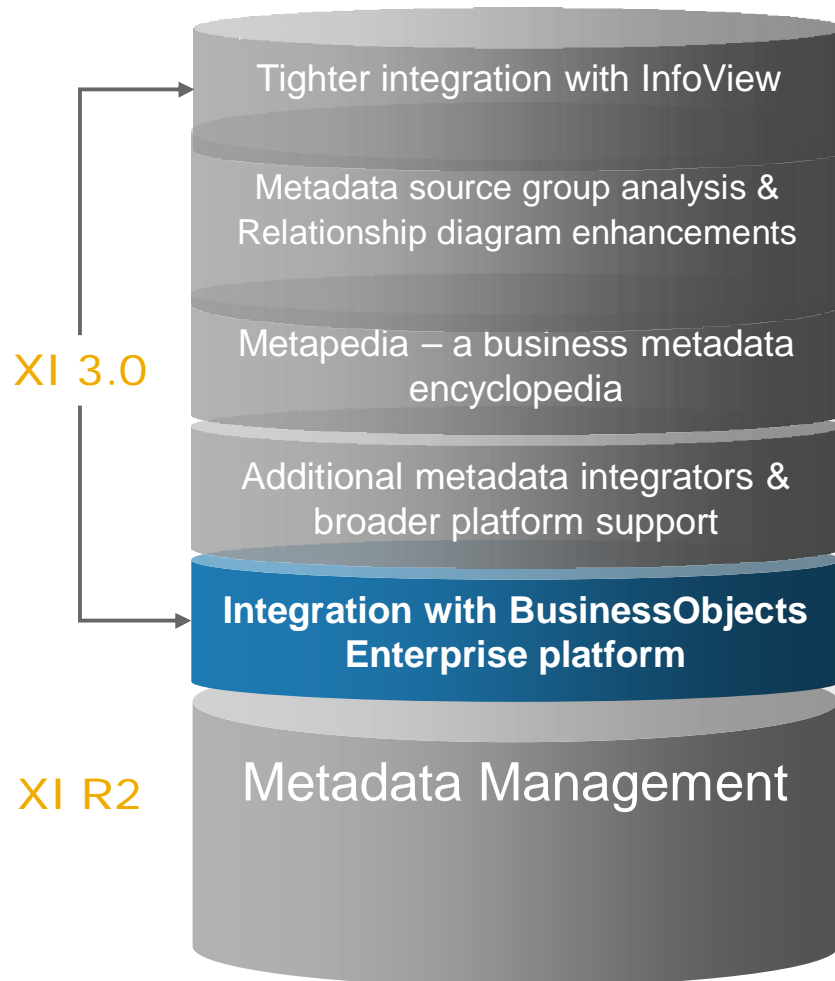


# Metadata Management XI 3.0



## New Functionalities

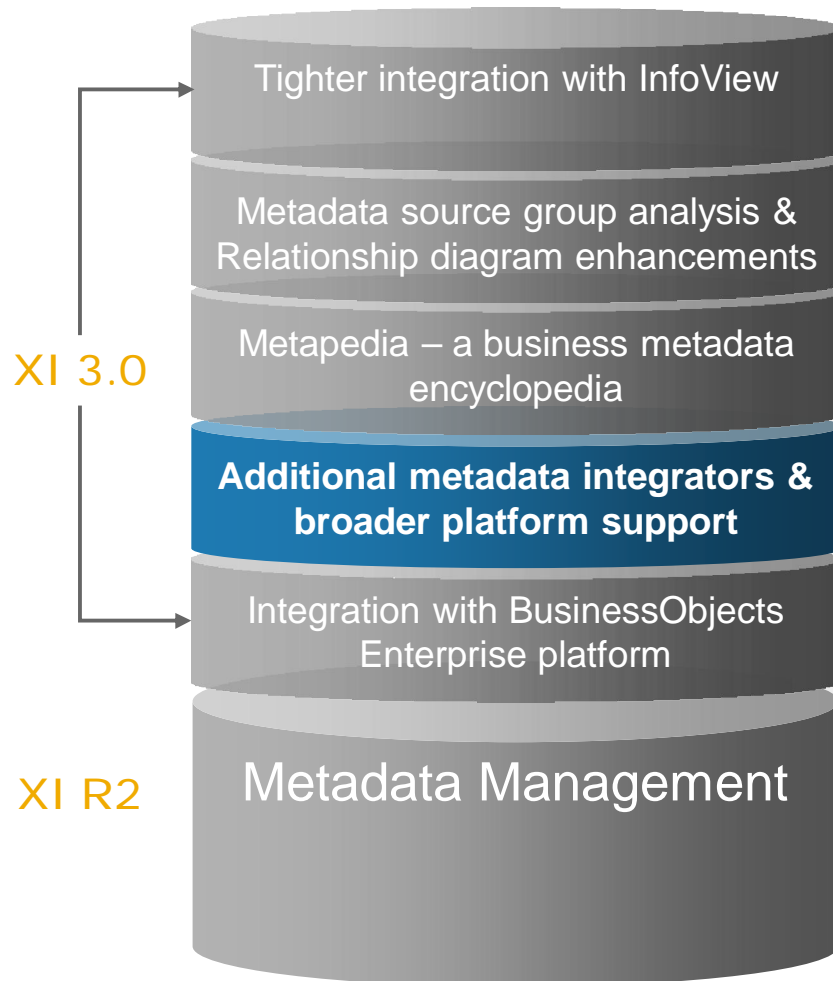
# Metadata Management XI 3.0 New Features



## Integration with BOE platform

- Integration with Central Management Server (CMS) – security services
- Single log on to the Central Management Console (CMC) and Metadata Management administration. It uses the following BOE services:
  - Security for user management and access to integrator sources, source groups, metapedia, and utilities
  - Manages and schedules integrator source runs, and utilities runs

# Metadata Management XI 3.0 New Features



## Additional metadata integrators

Data Federator  
Meta Integration Metadata Bridge (MIMB)

## Broader platform support

- Windows
- UNIX (Linux, Solaris, IBM AIX)

Application servers:

- Tomcat
- IBM WebSphere
- Oracle BEA WebLogic
- Oracle Application Server (OAS)

# Platform support



## Operating Systems

- Windows 2003
  - SP1 (Standard, Enterprise, Datacenter, Web Ed.)
  - SP2 (Standard, Enterprise, Datacenter, Web Ed.)
  - R2 (Standard, Enterprise, Datacenter, Web Ed.)
  - X64 Edition SP2
- Windows XP
  - SP2 (Professional)
  - SP3 (Professional)
- UNIX
  - Solaris SPARC (9 & 10)
  - IBM AIX (5.2, 5.3)
  - Linux RedHat 4

## Repository Database

- MySQL 5, Oracle (9.2, 10gR1, 10gR2, 11g)
- MS SQL Server
  - 2000 (SP4)
  - 2005 (SP1, SP2)
- DB2 (8.2, 9.1, 9.5)

## Application Server

- Tomcat 5.5
- IBM WebSphere (6.0 and 6.1)
- Oracle BEA WebLogic (9.2, 10)
- Oracle Application Services (OAS) 10gR3

## Browser

- IE 6 and 7

## Language

- English

## Business Objects

- DI XI R2 and above
- BOE XI R2 SP3 and above
- DF XI R2
- DS XI 3.0

**Metadata Management integrators and Metadata Management Search Server on Windows client only**

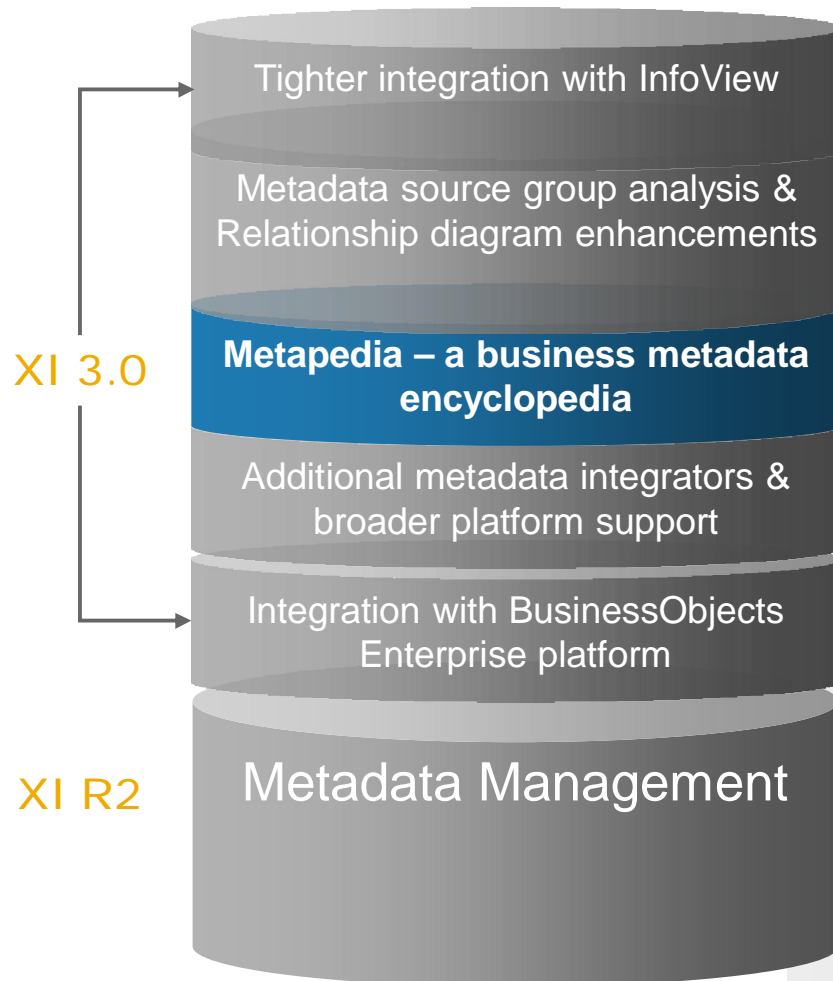
## ■ Metadata Integrators bundled with Metadata Management

- BOE XI/R2, XI 3.0
- Data Integrator XI/R2
- Data Services XI 3.0
- Data Federator XI/R2, XI 3.0
- CWM XML
- RDMS - Oracle, MS SQL Server, DB2, Teradata, and JDBC sources

## ■ Metadata Integrators from MITI (OEM partner) (MITI - Meta Integration Technology Inc)

- CA ERwin, Excel, Rational Rose, Sybase PowerDesigner, Oracle OWB
- plus metadata from other design tools, ETL tools, and OLAP/BI tools
- Approximately 50 distinct metadata sources
- Details list found at  
<http://www.metaintegration.net/Products/MIMB/SupportedTools.html>

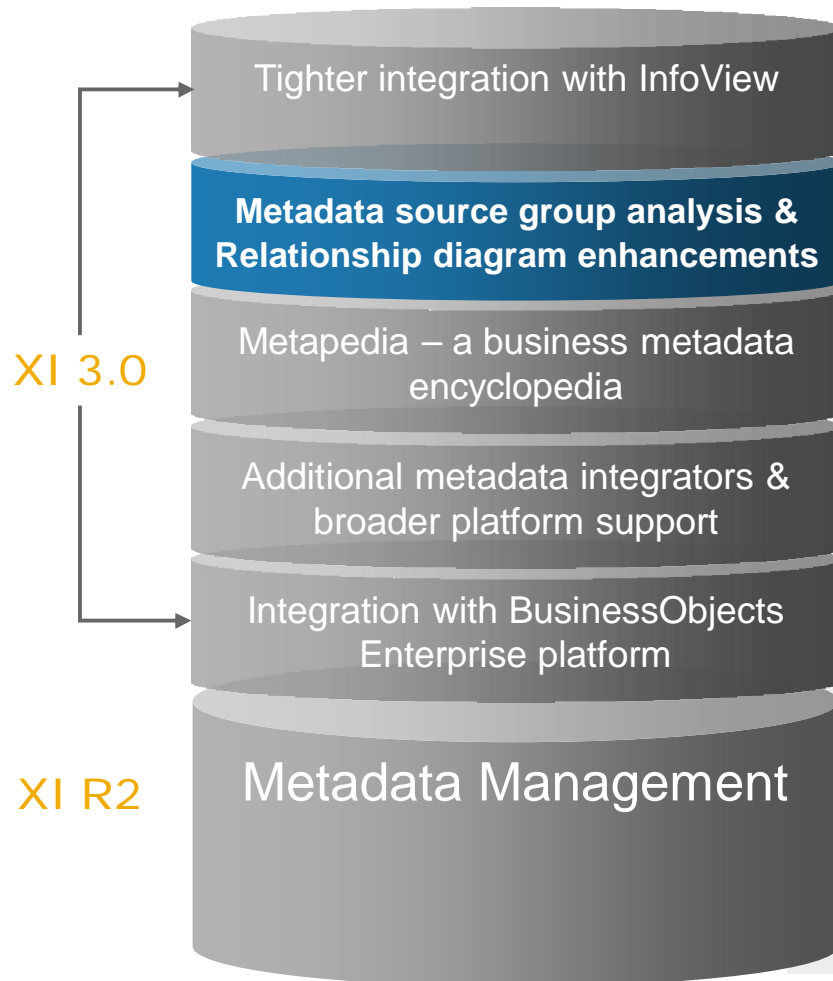
# Metadata Management XI 3.0 New Features



## Metapedia – a business metadata encyclopedia

- Business glossary of terms related to the business data
- Organizes terms hierarchically (subject area/BU)
- Link business terms to related metadata objects
- Build a standard business vocabulary of words, phrases, or business concepts
- Synonyms and keywords to associate a metadata object with a particular term
- Category and subcategory of terms to denote a common functionality
- Associate terms with more than one category
- Supports data governance, data stewardship, and proactive compliance

# Metadata Management XI 3.0 New Features



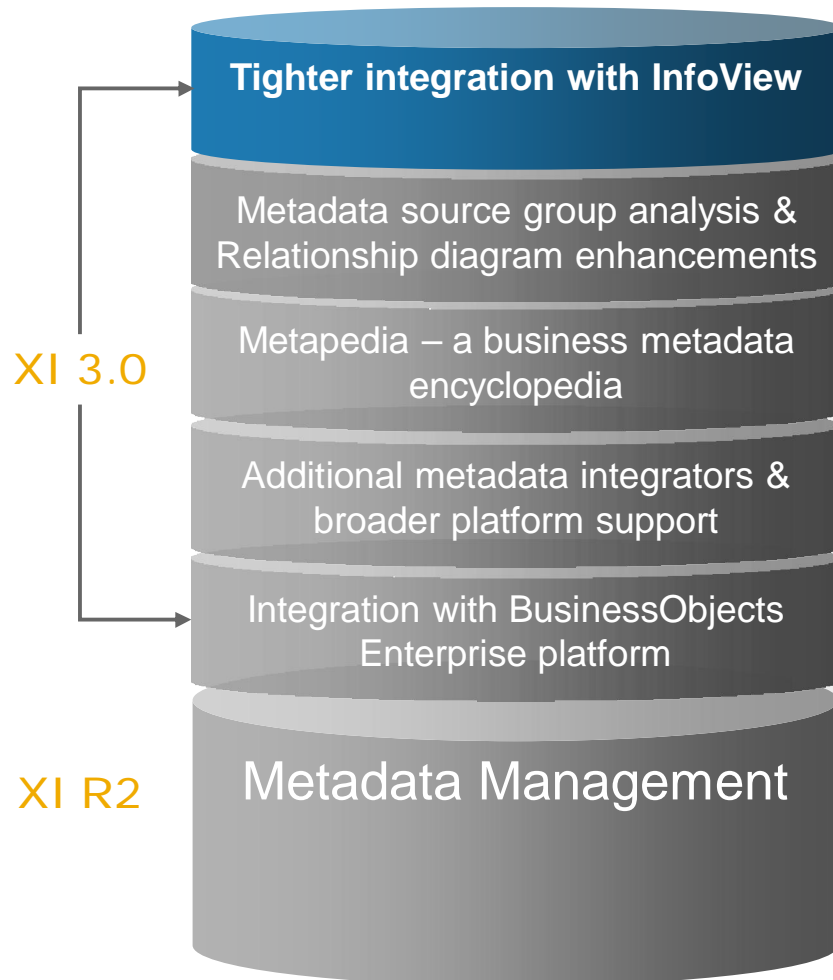
## Metadata source group analysis

- Group metadata integrator sources for efficient and targeted analysis on a subset of metadata
- View impact and lineage for specific “Source group”

**Relationship diagram enhancements** allows users of Metadata Management Explorer to:

- Specify a source group
- Change the number of objects that appear
- Change the size of the viewing area

# Metadata Management XI 3.0 New Features



## Tighter integration with InfoView

- Easy access to metadata for business users
  - BI users view data lineage for WebI, DeskI and Crystal within InfoView
  - Launch into Metadata Management Explorer from InfoView
- Users can see how data was computed and where it come from

# Metadata Management XI 3.0



## Product Demo and Screen Shots

# Integration with CMC



BusinessObjects Enterprise  
Central Management Console

CMC Home

Welcome: **Administrator** | Preferences | Log off | About | Help

**Organize**

- Folders
- Personal Folders
- Categories
- Personal Categories
- Users and Groups
- Profiles
- Inboxes
- Servers
- Connections
- Universes
- Replication Lists
- Federation
- Query Results
- Temporary Storage
- Voyager Connections
- Metadata Management**

**Define**

- Access Levels
- Calendars
- Events

**Manage**

- Instance Manager
- Applications**
- Settings
- Sessions
- Authentication
- License Keys

Configure Metadata Management application:  
Properties, User securities, Repository, and Utilities

Configure and schedule Metadata Management  
integrators and Source groups

# Configure Metadata Management

BusinessObjects Enterprise  
Central Management Console

Metadata Manager

Welcome: **Administrator** | Preferences | Log off | About | Help

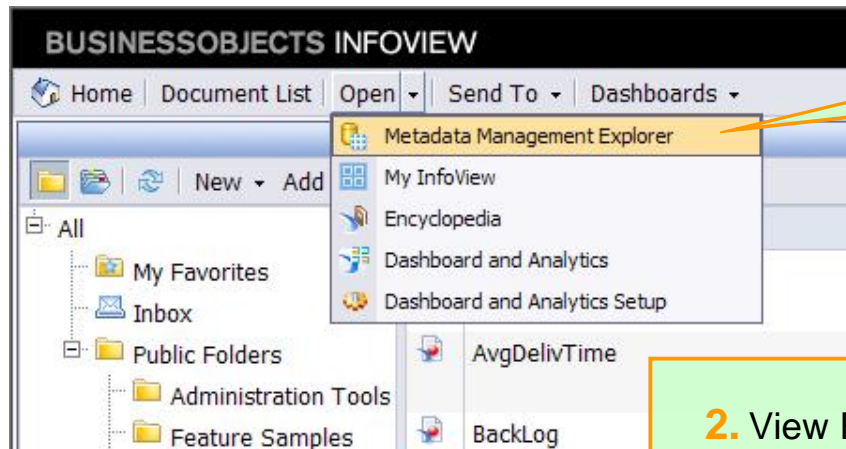
Manage ▾ Actions ▾

1 of 1

Name	Type	Category	Last Run
BOE XI R3 - Production	BusinessObjects Enterprise	Business Intelligence	Fri Apr 25 15:34:41 PDT 2008
CA ERwin eMovies CWM XML	Common Warehouse Modeling	Data Modeling	Fri Apr 25 15:05:06 PDT 2008
Oracle Sales RapidMart	BusinessObjects Data Services	Data Integration	Fri Apr 25 15:46:21 PDT 2008
STS Database	Relational Database	Relational Databases	Fri Apr 25 15:03:32 PDT 2008

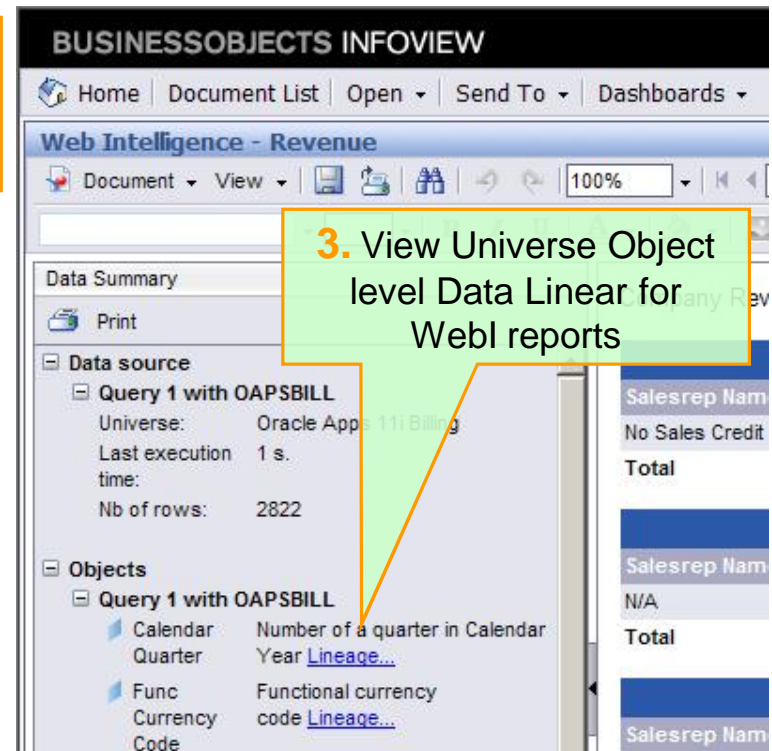
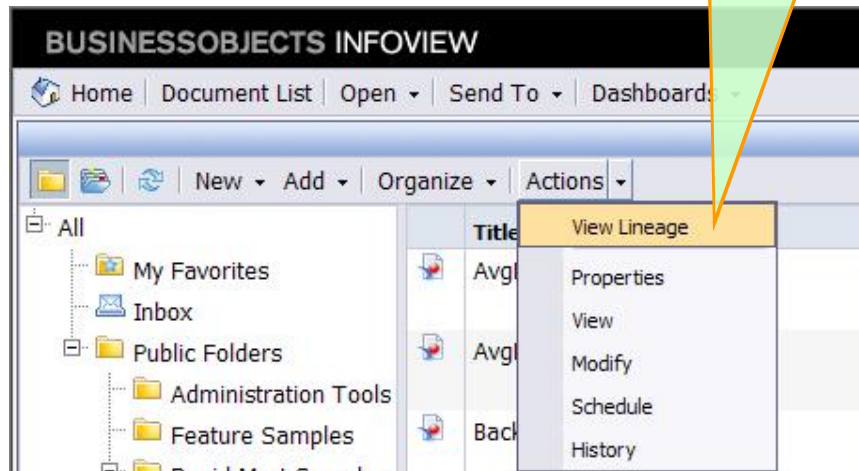
Configure and schedule Metadata Management integrators and Source groups

# Integration with InfoView



1. Launch Metadata Management with single-sign on

2. View Report level Data Linear



3. View Universe Object level Data Linear for Web reports

# Source Groups

The screenshot displays the Business Objects Metadata Management Explorer interface. At the top, the title bar reads "BUSINESSOBJECTS™ METADATA MANAGEMENT - EXPLORER". The main navigation pane on the left shows the hierarchy: Directory > Data Integration (Oracle Sales RapidMart) > Server Instances (RapidMart\_DBServer) > Databases (RapidMart\_DB) > Schemas (SA) > Tables (ORGANIZATION) > Columns (ORGANIZATION\_CODE). A search bar at the top allows filtering by "Oracle Sales RapidMart" or "Entire repository".

A "Settings" dialog box is open in the center, titled "Define impact relationship display settings". It contains the following options:

- Use source group: Production Source Group (selected)
- Show: All Sources (selected)
- Where Clause Objects:
- User Impact:
- View: Graphical (selected)

Buttons for "OK" and "Cancel" are at the bottom of the dialog.

On the right side, a "Users and Groups" panel shows a dependency diagram. It illustrates the impact of the "ORGANIZATION\_CODE" column on other objects. The diagram shows a flow from "ORGANIZATION\_CODE" to "Warehouse Code", "Organization Code", "InvoiceSummary", and "Revenue". Each of these objects is linked to a box indicating "1 Users, 1 Groups".

A green callout box with an orange border points to the "Settings" dialog and contains the text: "Analysis by source groups".

# Metapedia

## Business Metadata Encyclopedia

Business Objects  
an SAP company

SAP

1. New business metadata functionality

2. Search includes business terms and categories

The screenshot displays the Business Objects Metapedia interface. At the top, there is a search bar with a 'Search' button and an 'Advanced >>' link. Below the search bar is a navigation menu with 'Metapedia' highlighted. The main content area shows a list of categories on the left, including 'Financial', 'Insurance', 'Account Receivable', 'HealthCare', 'Radiology', 'Products', and 'AutoPart'. The 'Financial' category is selected, and the main area displays a table of associated terms. The table has columns for 'Name', 'Description', and 'Data Steward'. The terms listed include 'Air Waybill', 'Annuity', 'Back Order', 'Balance Sheet', 'Capital Gain', 'Cash Flow', 'Consignment', 'Depreciation', 'Direct Terms', 'Discount', 'Distributor', 'Duty', 'Fixed Cost', 'Income', and 'Income Statement'. A 'Filter terms' section is visible above the table, with options for 'By column', 'Starts with', and 'Pattern'. A 'Filter' button is also present.

Object Tray | Custom Attributes | Export List | Preferences | About | Logout

Search:  Search Advanced >>

Directory **Metapedia** Reports

Create Category Edit Category Delete Category Create Term Delete Terms Add to Category... Import from Excel Export to Excel

Filter terms: By column:  Starts with  Pattern:  Filter

Properties for Category: Financial

Associated Terms (35)

Name	Description	Data Steward
Air Waybill	A nonnegotiable instrument of domestic and international air transport...	X
Annuity	A regular periodic payment made by an insurance company to a policyhol...	X
Back Order	A customer order for materials, goods in process, or finished goods th...	X
Balance Sheet	The difference between a country's total imports and exports over a se...	X
Capital Gain	The positive change in the value of an asset, a negative capital gain ...	X
Cash Flow	Cash generated by the firm and paid to creditors and shareholders. It ...	X
Consignment	Delivery of merchandise from an exporter (the consignor) to an agent (...	X
Depreciation	1) The expense against earnings to write-off purchase price of an asse...	X
Direct Terms	The price of a unit of foreign currency in domestic currency terms, su...	X
Discount	The price of a unit of foreign currency in domestic currency terms, su...	X
Distributor	A foreign agent who sells for a supplier directly and maintains an inv...	X
Duty	A tax imposed on imports by the customs authority of a country.	X
Fixed Cost	A cost that is fixed in total for a given period of time and for given...	X
Income	The monetary payment received for goods or services, or from other sou...	X
Income Statement	Financial report that summarizes a firm's performance over a specified...	X

Pages: < Previous 1 2 3 Next >

3. Categorize business terms

# Metapedia – associate objects

**BUSINESSOBJECTS™ METADATA MANAGEMENT - EXPLORER**

Business Objects  
an SAP company

Object Tray | Custom Attributes | Export List | Preferences | About | Logout

Search Advanced >>

Directory **Metapedia** Reports

<< Return to All Terms

Edit Properties Associate Objects Associate from Object Tray Relate Terms Add to Category

**Properties for Term: Profit**

Name: **Profit** Synonyms: revenue, margin  
Description: Revenue minus cost. The amount one makes on a transaction. Keywords: Net gain  
Data Steward: Administrators Approved: Yes  
Associated Categories: Financial

Created by Utility on 2008-07-14 12:14:23.0, Modified by Administrator on 2008-08-14 00:37:52.0

**Related Terms (2)**

Name	
Sales	X
Revenue	X

**Associated Objects (6)**

Name	Path	
REVENUE_AMOUNT	Server Instances(ORA_SALES_CX) \ Databases(ORA_SALES_CX) \ Schemas(AR) \ Tables(RA_CUSTOMER_TRX_LINES_ALL) \ Columns(REVENUE_AMOUNT)	X
Revenue	CMS Systems(SJKTAN:6400) \ Universes(Island Resorts Marketing) \ Universe Classes(Measures) \ Universe Objects(Revenue)	X
Revenue	CMS Systems(SJKTAN:6400) \ CMS Folders(Rapid Mart Samples) \ CMS Folders(Orade SA) \ Reports(Revenue)	X
Sales revenue	CMS Systems(SJKTAN:6400) \ Universes(eFashion) \ Universe Classes(Measures) \ Universe Objects(Sales revenue)	X
Revenue	CMS Systems(SJKTAN:6400) \ Universes(Island Resorts Marketing) \ Universe Classes(Measures) \ Universe Objects(Revenue)	X
Sales revenue	CMS Systems(SJKTAN:6400) \ Universes(eFashion) \ Universe Classes(Measures) \ Universe Objects(Sales revenue)	X

**1. Define business terms.  
Add custom attributes.**

**2. Relate to other terms**

**3. Associate to any metadata objects**

Thank you!

# Copyright 2008 SAP AG

## All rights reserved



No part of this publication may be reproduced or transmitted in any form or for any purpose without the express permission of SAP AG. The information contained herein may be changed without prior notice.

Some software products marketed by SAP AG and its distributors contain proprietary software components of other software vendors.

SAP, R/3, xApps, xApp, SAP NetWeaver, Duet, SAP Business ByDesign, ByDesign, PartnerEdge and other SAP products and services mentioned herein as well as their respective logos are trademarks or registered trademarks of SAP AG in Germany and in several other countries all over the world. All other product and service names mentioned and associated logos displayed are the trademarks of their respective companies. Data contained in this document serves informational purposes only. National product specifications may vary.

The information in this document is proprietary to SAP. This document is a preliminary version and not subject to your license agreement or any other agreement with SAP. This document contains only intended strategies, developments, and functionalities of the SAP® product and is not intended to be binding upon SAP to any particular course of business, product strategy, and/or development. SAP assumes no responsibility for errors or omissions in this document. SAP does not warrant the accuracy or completeness of the information, text, graphics, links, or other items contained within this material. This document is provided without a warranty of any kind, either express or implied, including but not limited to the implied warranties of merchantability, fitness for a particular purpose, or non-infringement.

SAP shall have no liability for damages of any kind including without limitation direct, special, indirect, or consequential damages that may result from the use of these materials. This limitation shall not apply in cases of intent or gross negligence.

The statutory liability for personal injury and defective products is not affected. SAP has no control over the information that you may access through the use of hot links contained in these materials and does not endorse your use of third-party Web pages nor provide any warranty whatsoever relating to third-party Web pages

Weitergabe und Vervielfältigung dieser Publikation oder von Teilen daraus sind, zu welchem Zweck und in welcher Form auch immer, ohne die ausdrückliche schriftliche Genehmigung durch SAP AG nicht gestattet. In dieser Publikation enthaltene Informationen können ohne vorherige Ankündigung geändert werden.

Einige von der SAP AG und deren Vertriebspartnern vertriebene Softwareprodukte können Softwarekomponenten umfassen, die Eigentum anderer Softwarehersteller sind.

SAP, R/3, xApps, xApp, SAP NetWeaver, Duet, SAP Business ByDesign, ByDesign, PartnerEdge und andere in diesem Dokument erwähnte SAP-Produkte und Services sowie die dazugehörigen Logos sind Marken oder eingetragene Marken der SAP AG in Deutschland und in mehreren anderen Ländern weltweit. Alle anderen in diesem Dokument erwähnten Namen von Produkten und Services sowie die damit verbundenen Firmenlogos sind Marken der jeweiligen Unternehmen. Die Angaben im Text sind unverbindlich und dienen lediglich zu Informationszwecken. Produkte können länderspezifische Unterschiede aufweisen.

Die in diesem Dokument enthaltenen Informationen sind Eigentum von SAP. Dieses Dokument ist eine Vorabversion und unterliegt nicht Ihrer Lizenzvereinbarung oder einer anderen Vereinbarung mit SAP. Dieses Dokument enthält nur vorgesehene Strategien, Entwicklungen und Funktionen des SAP®-Produkts und ist für SAP nicht bindend, einen bestimmten Geschäftsweg, eine Produktstrategie bzw. -entwicklung einzuschlagen. SAP übernimmt keine Verantwortung für Fehler oder Auslassungen in diesen Materialien. SAP garantiert nicht die Richtigkeit oder Vollständigkeit der Informationen, Texte, Grafiken, Links oder anderer in diesen Materialien enthaltenen Elemente. Diese Publikation wird ohne jegliche Gewähr, weder ausdrücklich noch stillschweigend, bereitgestellt. Dies gilt u. a., aber nicht ausschließlich, hinsichtlich der Gewährleistung der Marktgängigkeit und der Eignung für einen bestimmten Zweck sowie für die Gewährleistung der Nichtverletzung geltenden Rechts.

SAP übernimmt keine Haftung für Schäden jeglicher Art, einschließlich und ohne Einschränkung für direkte, spezielle, indirekte oder Folgeschäden im Zusammenhang mit der Verwendung dieser Unterlagen. Diese Einschränkung gilt nicht bei Vorsatz oder grober Fahrlässigkeit.

Die gesetzliche Haftung bei Personenschäden oder die Produkthaftung bleibt unberührt. Die Informationen, auf die Sie möglicherweise über die in diesem Material enthaltenen Hotlinks zugreifen, unterliegen nicht dem Einfluss von SAP, und SAP unterstützt nicht die Nutzung von Internetseiten Dritter durch Sie und gibt keinerlei Gewährleistungen oder Zusagen über Internetseiten Dritter ab.

Alle Rechte vorbehalten.